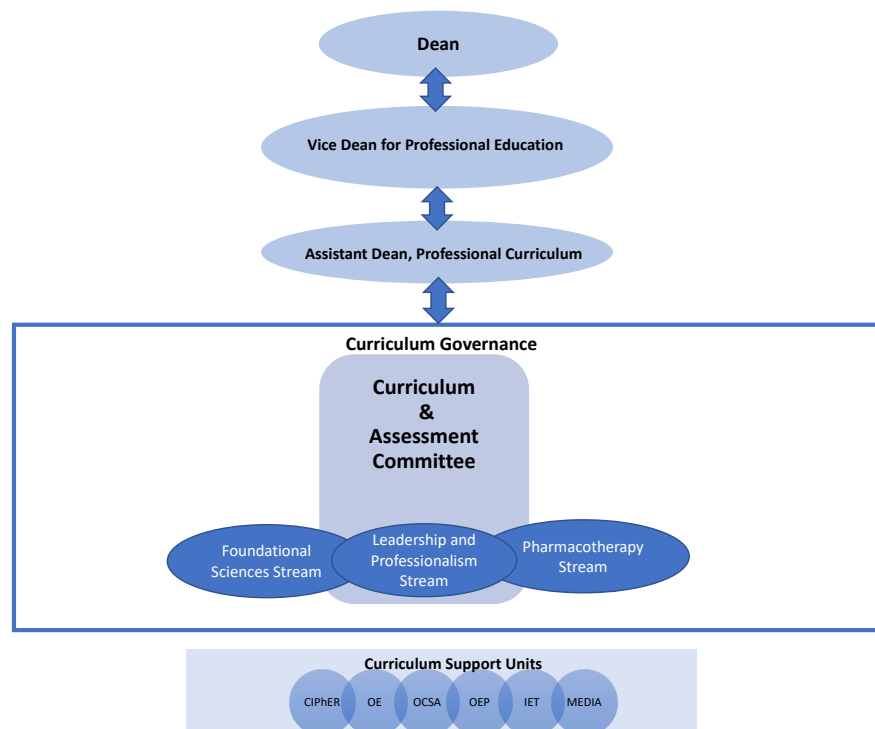


PHARMD CURRICULUM MANAGEMENT STRUCTURE AND GOVERNANCE

4/13/21

OVERVIEW

The PharmD curriculum is governed by the Curriculum and Assessment Committee with support from the Course Streams. The Assistant Dean of the Professional Curriculum and the Registrar and Curriculum Manager assists these groups with managing the curriculum. There are also several School Offices that serve as curriculum support units.



CURRICULUM AND ASSESSMENT COMMITTEE

Charge:

Provide oversight of the PharmD curriculum, ensuring that the professional program remains innovative and impactful and utilizes a vanguard, evidence-based approach to implementation and continuous quality improvement. This includes:

- ensuring alignment of andragogy and assessments with the outcomes of the program;
- reviewing and approving all new and revised course proposals and syllabi (residential and experiential) to ensure
 - Feasibility of implementation
 - Congruence with the curriculum philosophy
 - Alignment with established outcomes and competencies of the curriculum
 - Adherence to School and University policies and procedures
 - Adherence to ACPE standards for accreditation

- reviewing and approving annual course stream assessments, recommendations, and priorities, and ensuring effective and timely implementation;
- reviewing and interpreting the professional program assessment data in collaboration with course streams, and ensuring implementation of recommendations accordingly;
- reviewing and approving new curriculum innovations or initiatives as well as policies and procedures; and
- informing the Education Advisory Committee of any new innovative ideas and opportunities.

Report: Faculty through Vice Dean for Professional Education

Member Expectations:

- Participate as a non-biased member of the Curriculum and Assessment Committee (CAC) irrespective of role(s) in the curriculum (administrator, course director, office representative, etc.).
- Represent the faculty at large from the perspective of an integrated, evidenced based curriculum with the students at the center.
- Regularly and actively engage in CAC meetings.
- Actively participate in and lead as needed working groups developed around CAC needs.
- Report back to their respective divisions and offices/units regarding meeting highlights. Summary of meeting highlights will be distributed to members for communication to Division faculty.
- Solicit thoughts, feedback, and ideas from respective Divisions and offices/units and bring this information back to CAC.

Composition:

Chair: Dennis Williams

Vice-chair: Jackie Zeeman

Members: Rebecca Carlson (HSL Librarian), Amber Cipriani (UNC Medical Center), Jessica Greene, Nicki Reitter, Phil Rodgers, Greene Shepherd, Scott Singleton, David Steeb, Deborah Sturpe, Casey Tak, Brad Wingo, Amanda Corbett (ex officio), *Student Representatives:* Julian Garcia (PY2 – Chapel Hill), Nathan Saunders (PY2 – Asheville), Jasmine Johnson (PY3 – Chapel Hill), Caroline Childs (PY3 – Asheville), *Liaison:* Melissa Jones

COURSE STREAMS

Overview:

Course streams are working groups comprised of all course directors of required PharmD courses. While course directors are expected to contribute to streams, the streams are intended to be inclusive of any and all teaching faculty without exclusivity of membership. All faculty, staff, and post-docs who teach in the curriculum are encouraged to attend stream meetings. The streams ensure alignment, integration, and continuous quality improvement in the courses. Stream leads liaise with the assistant dean for the professional curriculum to ensure stream charges and discussions connect across all streams and ultimately the curriculum. There are three course streams:

- Foundational Sciences
- Leadership and Professional Development
- Pharmacotherapy

The course stream chairs provide monthly updates on their work to the CAC. Significant course and curriculum changes should be endorsed by the streams and vetted and approved by the CAC.

Charge:

Ensure the courses within the streams are maintaining a vanguard, evidence-based approach to the delivery of the professional program by:

- developing a current inventory of learning outcomes, andragogy, and assessments for each course within the stream and conducting a gap analysis to identify opportunities for improvement;
- contributing to the development of the EPAs and competencies for the professional program; and
- reviewing all course evaluation data, student end-of-year survey data, graduating student survey data and any additional relevant data provided by the Office of Organizational Effectiveness, Planning, and Assessment (Office of OE) to ensure that major areas of feedback are addressed and incorporated into subsequent offerings.

Composition:

Foundational Sciences Course Stream

Co-Chairs: Jessica Greene and Scott Singleton

Expected contributors: Macary Marciniak, Adam Persky, Bob Shrewsbury, *Liaison:* Vicky Burriss
Open to all faculty who wish to participate.

Leadership and Professional Development Course Stream

Chair: David Steeb

Expected contributors: Wendy Cox, Jon Easter, Stephen Eckel, Nicki Reitter, Phil Rodgers, Scott Savage, Mollie Scott, Charlene Williams, Brad Wingo, Jackie Zeeman, *Liaison:* Vicky Burriss
Open to all faculty who wish to participate.

Pharmacotherapy Course Stream

Co-Chairs: Heidi Anksorus and Deborah Sturpe

Expected contributors: Amber Frick, Kathryn Fuller, Suzie Harris, Kathryn Morbitzer, Benyam Muluneh, Jo Ellen Rodgers, Phil Rodgers, Amanda Savage, Carolyn Thorpe, Dennis Williams, *Liaison:* Vicky Burriss
Open to all faculty who wish to participate.

EDUCATION ADVISORY COMMITTEE

Charge: Ensure all of the School's educational programs (e.g., PharmD, MS, PhD, Continuing Education, emerging programs) both residential and online, are bold, innovative, and impactful, and that innovation, implementation, and assessment are well coordinated across programs. Provide strategic leadership to ensure that existing programs and new offerings are envisioned and framed appropriately, evidence-based where possible, aligned with related programs in the curricula, and feasible for implementation.

Note: The Education Advisory Committee is "advisory" in nature and does not make curriculum governance decisions.

Report: Dean

Composition:

Chair: Mary McClurg

Members: Amanda Corbett, Wendy Cox, Stephen Eckel, Chris Gosk, Josh Guffey, Mike Jarstfer, Catherine MacAllister, Jacqui McLaughlin, Denise Rhoney, Alex Tropsha, Carla White, *Liaison:* Heidi Collins